

CZ Scorpion® EVO 3 Carbine Bullpup Kit Installation Manual



For questions concerning this kit or for more information, please contact us at **info@cz-usa.com**.

WARNING: ALWAYS VERIFY YOUR FIREARM IS UNLOADED PRIOR TO INSTALLING ANY PARTS!

WARNING: THIS KIT IS FOR RIGHT-HANDED USE ONLY. SERIOUS INJURY COULD RESULT FROM FIRING AN ASSEMBLED FIREARM LEFT-HANDED.

WARNING: SERIOUS INJURY COULD RESULT FROM FIRING AN ASSEMBLED FIREARM WITHOUT THE INCLUDED CHEEKPIECE INSTALLED. FOR SAFETY THE CHEEKPIECE SHOULD ALWAYS BE INSTALLED.

WARNING: THIS PRODUCT WAS DESIGNED TO FUNCTION PROPERLY IN ITS ORIGINAL CONDITION. ALTERATIONS CAN MAKE IT UNSAFE. DO NOT ALTER ANY PARTS OR ADD OR SUBSTITUTE PARTS OR ACCESSORIES.

WEAR SHOOTING GLASSES AND HEARING PROTECTION WHEN YOU SHOOT. All shooters should wear protective shooting glasses and adequate hearing protection when shooting. Exposure to shooting noise can damage hearing, and wearing adequate eye protection when shooting is essential

WEAR EYE PROTECTION AT ALL TIMES WHEN INSTALLING KIT.

The product is compatible with the following firearms:
CZ Scorpion® EVO 3 S1 Carbine

The following parts are included in the Scorpion® Bullpup Kit:

- (1) Bullpup lower receiver (part 40601)
- (1) Buttplate assembly (part 40604)
- (1) Cheekpiece left side (part 40605)
- (1) Cheekpiece right side (part 40606)
- (1) Magazine release (part 40607)
- (2) Trigger bar hats (part 40608)
- (1) Picatinny riser (part 40609)
- (1) Safety (part 40610)
- (1) Trigger shoe (part 40611)
- (1) Front trigger mount (part 40612)
- (1) Front hook (part 40613)
- (2) QD pockets (part 40614)
- (1) Retainer bar (part 40615)
- (1) Trigger bar (part 40616)
- (1) Safety detent (part 40617)
- (1) Safety detent spring (part 40618)

A Hardware Pack with following contents:

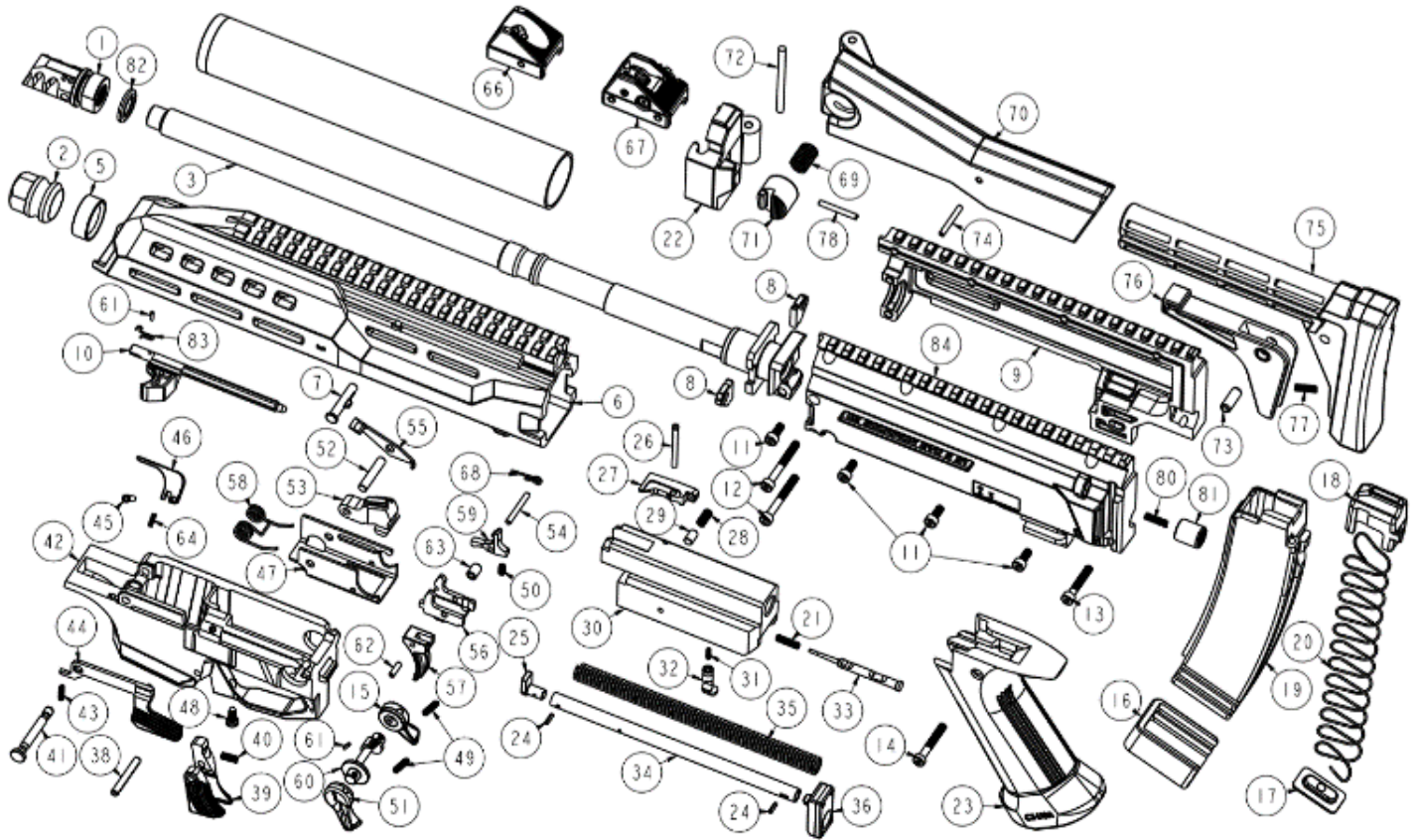
(A complete Hardware Pack is part 40633)

- (1) M4 x 0.7mm 10mm socket head cap screw (part 40620)
- (1) M4 x 0.7mm 10mm round head screw (part 40621)
- (1) M4 x 0.7mm 20mm round head screw (part 40624)
- (1) M3 x 10mm coiled spring pin (part 40625)
- (4) M3 x 0.5mm 6mm round head screw (part 40626)
- (4) M3 x 0.5mm 10mm round head screw (part 40627)
- (2) M4 x 0.7mm 30mm long round head screw (part 40628)
- (3) M3 x 0.5mm 30mm long socket head cap screw (part 40622)
- (1) M1.5 hex key (part 40632)
- (1) M2.0 hex key (part 40629)
- (1) M2.5 hex key (part 40630)
- (1) M3.0 hex key (part 40631)

You will need the following tools:

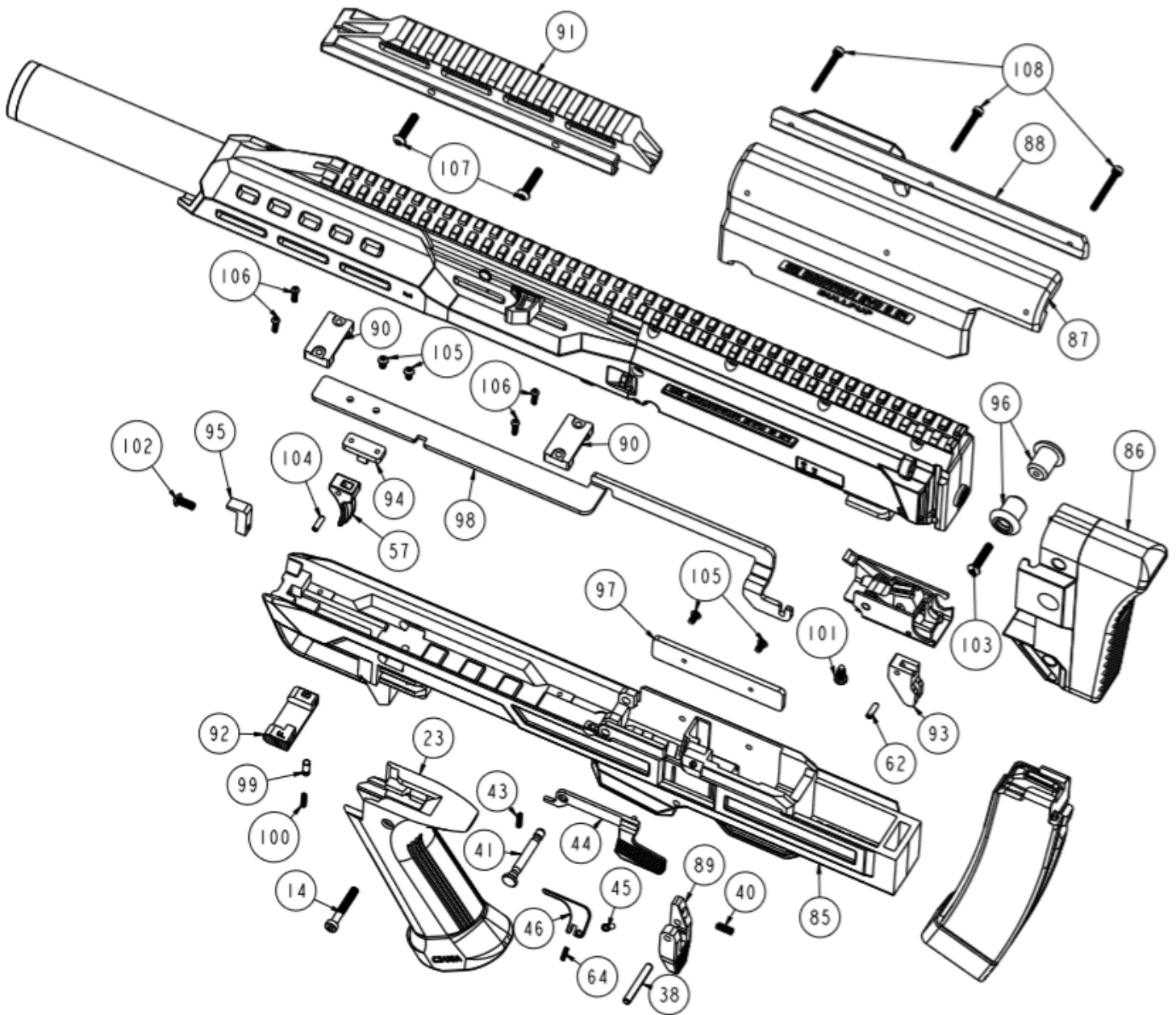
- 1/8" or 4mm punch
- Hammer
- Rubber mallet
- Small screwdriver or prying tool

CZ Scorpion® EVO 3 S1 Carbine Parts



1	Compensator*	19347	29	Extractor spring base	3660-0240-0703	57	Trigger	3660-0390-0703
2	Barrel Nut*	3660-0060-0703	30	Slide	3662-0300-0704	58	Hammer spring	3660-0610-0703
3	Barrel*	3661-0040-0706	31	Striker block spring	3660-0510-0703	59	Disconnecter	3660-0410-0702
4	-----	-----	32	Striker block	3660-0220-0703	60	Safety plug	3660-0470-0702
5	Ring	3660-0020-0703	33	Striker	3660-0230-0703	61	Safety pin plug	3111-2785-1506
6	Hand guard*	19339	34	Guide stud	3660-0280-0703	62	Trigger pin short	3117-3430-3010
7	Hand guard pin	3660-1550-0703	35	Recoil spring	3660-0190-0703	63	Trigger insert	3660-1450-0702
8	Front swivel (2x)	3360-0051-0703	36	Buffer	3661-0210-0703	64	Ejector spring	3660-0510-0703
9	Receiver	3660-0140-0705	37	-----	-----	65	-----	-----
10	Tireant and fingerboard	662-0620-0703	38	Magazine catch pin	3117-3430-4030	66	Front sight	5453-6690-1001
11	Short receiver screw (4x)	3099-1210-4010	39	Magazine catch	3660-0560-0703	67	Rear sight	5453-6690-1002
12	Long receiver screw (2x)	3099-1210-4032	40	Magazine catch spring	3660-0520-0701	68	Trigger spring	3660-0960-0703
13	Medium receiver screw	4653-6611-0701	41	Disassembly pin	3660-0590-0703	69	Stock catch spring	-----
14	Pistol grip screw	3660-1040-0703	42	Trigger unit casing	3660-0320-0702	70	Stock tube	-----
15	Right fire mode lever	3660-0450-0703	43	Slide release spring	3660-0830-0703	71	Stock catch	-----
16	Magazine base	19335	44	Slide release	3660-0580-0703	72	Joint pin	-----
17	Magazine base catch	3360-0750-0703	45	Ejector pin	3660-0550-0703	73	Stock positioner pin	-----
18	Follower	19336	46	Ejector	3660-0540-0703	74	Shoulder stock pin	-----
19	Magazine body	3660-0720-0705	47	Trigger case	3660-0320-0702	75	Shoulder stock*	3660-1310-0703
20	Magazine spring	3660-0710-0703	48	Case securing screw	3660-0420-0703	76	Stock positioner	3660-1340-0701
21	Striker spring	3660-0600-0703	49	Control screw (2x)	3099-1300-3014	77	Positioner spring	3153-6613-7701
22	Stock/body joint	3660-1350-0703	50	Striking mechanism spring	3660-0950-0703	78	Stock catch pin	-----
23	Pistol grip	3660-0170-0703	51	Left fire mode lever	3660-0440-0703	79	-----	-----
24	Locking pin (2x)	3117-3430-2008	52	Hammer pin	3660-0380-0703	80	-----	-----
25	Front locking stud	3660-0270-0703	53	Hammer	3660-0360-0704	81	Stock retaining button	3660-0790-0703
26	Extractor pin	3660-0260-0703	54	Trigger pin long	3660-0350-0703	82	Crush washer	19330
27	Extractor	3660-0250-0703	55	Block lever	3660-0370-0703	83	Cocking handle spring	3660-0990-0703
28	Extractor spring	3660-0180-0703	56	Trigger housing	3660-0400-0702	84	Receiver cover left	3660-0150-0702

CZ Scorpion® Bullpup-Specific Parts



85	Bullpup lower receiver	40601	97	Retainer bar	40615
86	Buttplate assembly	40604	98	Trigger bar	40616
87	Cheekpiece left side	40605	99	Safety detent	40617
88	Cheekpiece right side	40606	100	Safety detent spring	40618
89	Magazine release	40607	101	M4 x 10mm socket head cap screw	40620
90	Trigger bar hat (2x)	40608	102	M4 x 10mm round head screw	40621
91	Picatinny riser	40609	103	M4 x 20mm round head screw	40624
92	Safety	40610	104	M3 x 10mm coiled spring pin	40625
93	Trigger shoe	40611	105	M3 x 6mm round head screw	40626
94	Front trigger mount	40612	106	M3 x 10mm round head screw	40627
95	Front hook	40613	107	M4 x 30mm round head screw	40628
96	QD pockets	40614	108	M3 x 30mm socket head cap screw	40622

Assembly Instructions

STEP 1:

Remove the magazine and make sure the gun is unloaded.

Per the CZ Scorpion® EVO 3 S1 instruction manual, remove the **trigger unit casing** (part 42), and the **stock assembly** or **endcap** (part 22) from the firearm. Remove the **pistol grip** (part 23) by first using the supplied 3mm hex key to remove the **pistol grip screw** (part 14) and slide the grip off the receiver to the rear. (Note that the pistol grip is often snug and may require additional force to slide off.) Additionally, remove the **front and rear sight** (part 66 and 67) and any optic or accessory that may be attached to the picatinny rail atop the **receiver** (part 9) and **handguard** (part 6).

STEP 2:

Remove the ejector assembly from the original **trigger unit casing** by unscrewing the **ejector pin** (part 45) with the supplied 2mm hex key until you can pull it out with your fingers — it is only partially threaded. Be aware that the **ejector** (part 44) has the **ejector spring** (part 64) trapped under it, make sure not to lose the **spring** when pulling out the **ejector**.

STEP 3:

Remove the **trigger case** from the original lower by setting the fire mode levers to the “fire” position, then unscrewing the **control screw** (part 49) from the **right fire mode lever** (part 15) using the supplied 1.5mm hex key followed by pulling the **right fire mode lever** off. Pull the rest of the safety lever assembly out from the left side. Continue the process by removing the **case securing screw** (part 48) from the underside of the original **trigger unit case** using the supplied 3mm hex key, then pull the **trigger pack** straight up out of the **trigger unit case**.

CAUTION:

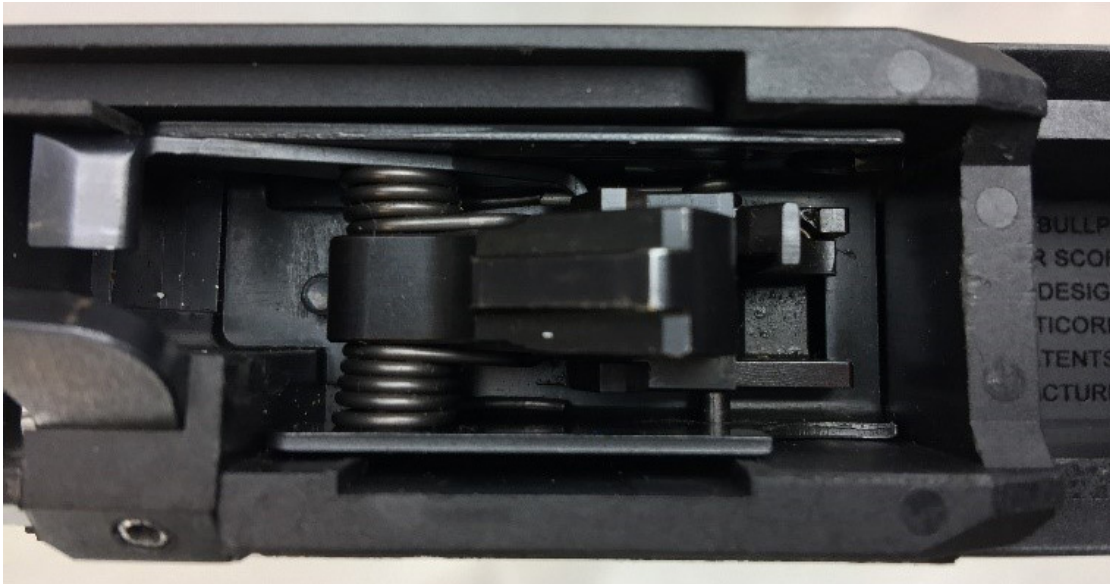
The **case securing screw** is typically secured with blue thread locker, and in some instances with a bead of weld. Be careful not to strip the head of the **case securing screw** or strip the threads in the **trigger case** (part 47) when trying to remove it. The screw will not be re-used and a new **screw** (part 101) is included for installation into the new **trigger unit casing**.

STEP 4:

Remove the **disassembly pin** (part 41) by depressing the front of the **slide release** (part 44) and pulling the **disassembly pin** all the way to the left until clear of the **trigger unit casing**. Remove the **slide release** by pressing up and pulling outward on the “paddle” portion, this may take some leverage and force. You may find it helpful to use a small screwdriver or prying tool to get the necessary leverage. Take care not to lose the **slide release spring** (part 43) during this process. It may be possible to remove the **slide release spring** prior to fully removing the **slide release**.

STEP 5:

Remove the **magazine catch** (part 39) by using a punch and hammer to tap out the **magazine catch pin** (part 38) and take care not to lose or damage the **magazine catch spring** (part 40) during this process. You will not use the original **magazine catch**, as a new one (part 89) is provided.



STEP 6:

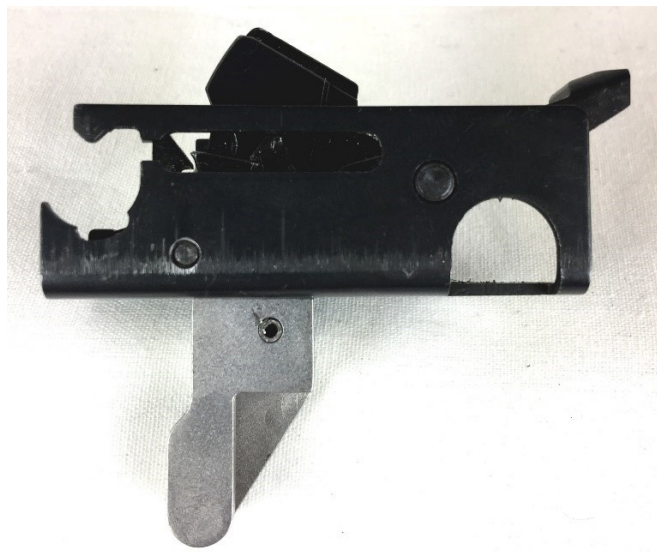
Take the **trigger case** (part 47) and place on a solid surface. Use a hammer and punch to remove the **trigger pin** (part 62) and remove the **trigger** (part 57).

CAUTION:

The **pins** in the **trigger pack** are not “captured” and can easily work themselves out of position from vibration while using the hammer and punch to remove the **trigger**. It is recommended you use your palm, a clamp, a block of wood or some similar item to “capture” the sides of the **trigger pack** to prevent the **pins** from working their way out. Study the **trigger pack** assembly prior to Step 6 so that you fully understand the relationship of all the components.

STEP 7:

Install the **trigger shoe** (part 93) on the **trigger pack** with the **trigger pin** (part 62). The angled surface will be towards the front of the gun and the flat surface towards the rear.



STEP 8:

Install the **magazine release** (part 89) with the **magazine catch pin** (part 38) and the **magazine catch spring** (part 40) located in the same position on the new lower as it was on the original lower. The groove side of the **magazine release** will be towards the rear. Ensure function by inserting an unloaded magazine to make sure the magazine locks in place when inserted.

STEP 9:

Install the **slide release spring** (part 43) then the **slide release** (part 44) into the **Bullpup lower receiver**. Once again, this may take some effort. The easiest way to accomplish this is to place the paddle portion of the **slide release** roughly in its proper position with the front end angled up and press on the side of the front end to start aligning it into the slot. Then tap the top of the front end of the **slide release** with hammer until it pops down into position. Once the **slide release** is in position, install the **disassembly pin** (part 41). Insert an empty magazine into the lower receiver to ensure function of the **slide release**.



STEP 10:

Using the supplied 2.5mm hex key, install the **front hook** (part 95) with the **M4 x 0.7mm 10mm long round head screw** (part 102) in the front of the **Bullpup lower receiver**. Ensure the hook is vertical after tightening the screw.

STEP 11:

Place the **safety detent spring** (part 100) followed by the **safety detent** (part 99) “pointy” end up into the hole between the safety openings in the **Bullpup lower receiver**. Slide the **safety** (part 92) through the left safety opening at an upward angle, and then press down onto the **safety detent** and slide through the safety opening on the right side until a “click” is heard.

CAUTION:

It is critical that the **safety detent** have the pointed end facing upwards into the underside of the **safety** to ensure the safety will lock into the Safe and Fire positions properly!



STEP 12:

Install the **trigger** (part 57) on the **front trigger mount** (part 94) with the **M3 x 10mm coiled spring pin** (part 104) included in the hardware set. Note that the semi-circular cutout on the **front trigger mount** faces towards the front.

STEP 13:

Using the supplied 2mm hex key, install the now assembled **front trigger mount** on the **trigger bar** (part 98) with two (2) **M3 x 0.5mm 6mm long round head screws** (part 105) but leave the screws slightly loose at this time. Note that the bar is designed to raise up and clear the right side of the magazine well and then drop down below the trigger pack, use this to determine the proper mounting orientation of the **front trigger mount** assembly. Drop the entire assembly into the **Bullpup lower receiver** and slide back and forth to ensure no binding.

STEP 14:

Using the supplied 2mm hex key, install the two (2) **trigger bar hats** (part 90) over the **trigger bar** with two (2) **M3 x 0.5mm 10mm long round head screw** (part 106) each. A total of four screws will be used. After fully tightened, ensure the **trigger bar** slides freely. Now fully tighten the screws that mount the **front trigger mount** to the **trigger bar** and ensure there is no binding and that the Trigger Bar can move freely. If binding occurs, loosen the **front trigger mount** screws and adjust the position until no binding occurs, and then tighten down the screws again. A small amount of adjustment is intentionally built in to allow for manufacturing tolerances and for the fitment of aftermarket trigger bows.

FUNCTION TEST:

At this point, press the **safety** from Safe to Fire and back again several times. It should make a positive “click” and be clear from viewing that the **safety** mechanically blocks the **trigger bar** when engaged in the “Safe” position. Pressing the **safety** from right to left will switch the lower from Safe to Fire. Pressing the **safety** from left to right will switch the lower from Fire to Safe. The right side of the **safety** is marked “S” to denote SAFE when visible and the left side of the **safety** is marked “F” to denote FIRE when visible.

STEP 15:

Place the **retainer bar** (part 97) in the slot on the right side of the magazine well and trigger well. Align the threaded holes in the **retainer bar** with the holes on the right side of the **Bullpup lower receiver** and using the supplied 2mm hex key, thread two (2) **M3 x 0.5mm 6mm long button head screws** (part 105) through the **Bullpup lower receiver** (part 85) into the **retainer bar** and tighten. The **retainer bar** prevents the pins in the **trigger pack** from coming out the right side of the pack during operation and provides an additional bearing surface in the magazine well.

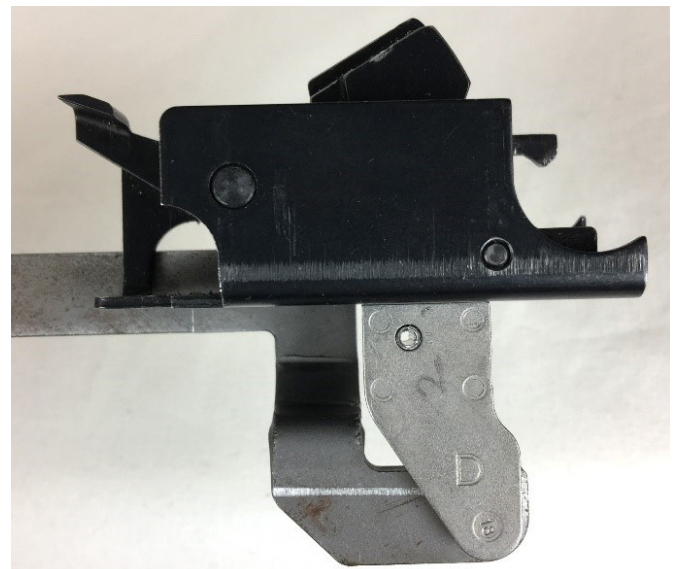
STEP 16:

Mount the **pistol grip** (part 23) onto the lug just behind the trigger guard. In some cases, the grip may have a snug fit going onto the lug, and can be tapped into place with a rubber mallet. Once fully seated, install the **pistol grip screw** (part 14) that retains the grip.

STEP 17:

Place the **safety** on “Safe” to hold the **trigger bar** in position, and then take the **trigger pack** and press straight down into the trigger well. Note that it will be a snug fit. Once the pack is as far in as it will go, switch the Safety to “Fire” and press the **trigger pack** down. Using the supplied 3mm hex key, take the included **M4 x 0.7mm 10mm long socket head cap screw** (part 101) and install through the underside hole just behind the **magazine release**. Tightening the screw will pull the **trigger pack assembly** down into the correct position.

This photo shows the relationship up **trigger bar** and **trigger shoe**, as viewed from the left side. The **trigger bar** (part 98) fits between the “legs” of the **trigger shoe** (part 93), and the integral crosspin of the **trigger shoe** sits in the notch on the top rear of the **trigger bar**.



CAUTION:

The goal of STEP 17 is to have the integral crosspin on the **trigger shoe** fit into the slot on the rear of the **trigger bar**. This connection allows the **trigger** and **trigger pack** to act the same as in the original firearm- any manipulation of the trigger will cause action in the **trigger pack**. This also means that engaging the safety will mechanically lock the **trigger pack** so that no action may take place in the **trigger pack**, i.e. the hammer cannot physically move when the **safety** is engaged. It is critical to follow the directions in Step 15 to ensure the **trigger shoe** is properly mated to the slot in the **trigger bar**.

FUNCTION TEST:

At this point, place your firing hand on the **pistol grip**, set the **safety** to “Fire” and make sure the **hammer** is cocked in the **trigger pack**. Place your off-hand thumb or finger in front of the **hammer** to prevent it from slamming forward into the plastic receiver and then pull the **trigger** and release it. The **hammer** should release and go forward. Now cock the **hammer** with your off-hand finger. You should see the **trigger bar** move and the **trigger** reset. Now place the **safety** on “Safe” and pull the **trigger**. The **trigger** and **trigger bar** should have minimal to no movement. If the operation differs from any of the above, remove the **trigger pack** and redo Step 17. *Small adjustment to the trigger bar may be necessary to achieve a positive reset*

CAUTION:

A variety of lighter springs and aftermarket triggers are available for the CZ Scorpion® EVO. ALWAYS DO A FUNCTION TEST ON AFTERMARKET MODIFICATIONS PRIOR TO ACTUAL USE. If the trigger pack does not reset, or function differs from the description above, DO NOT USE THE AFTERMARKET MODIFICATION. CZ, CZ-USA, AND MANTICORE ARMS SHALL NOT BE HELD LIABLE FOR THE USE OF ANY AFTERMARKET MODIFICATIONS OF THIS PRODUCT.

STEP 18:

Install the **ejector** (part 46), **ejector spring** (part 64), and **ejector pin** (part 45) on the **Bullpup lower receiver**. Tighten the **ejector pin** using the supplied 2mm hex key below flush with the outside of the **Bullpup lower receiver**. Press on the front of the **ejector** and make sure it hinges up and down a bit. The **ejector** moves as the bolt cycles against it.

STEP 19:

Lock the **slide** (part 30) back on the **upper receiver**. Make sure the **disassembly pin** (part 41) on the **Bullpup lower receiver** is pulled out in the “assemble/disassemble position” i.e. sticking out of the left side of the **lower receiver**. Hook the **front hook** (part 95) into the proper slot in the **hand guard** (part 6) and hinge the **Bullpup lower receiver** (part 85) upwards. Push through the **disassembly pin** to connect the upper and lower receiver.

STEP 20:

Take the two **QD pockets** (part 96) and using the supplied 2.5mm hex key, thread the **M4 x 0.7mm 20mm long round head screw** (part 103) through the QD face of one of them until fully tight. Insert the **QD pockets** into the holes on the right and left side of the **buttplate assembly** (part 86) and screw them together until tight.

STEP 21:

Locate the **buttplate assembly** (part 86) below the rear of the **Bullpup lower receiver** (part 85) and slide upwards so the “fingers” of the **buttplate assembly** engage the grooves on the rear of the **receiver**. Give a slap on the underside and the button on the rear of the upper receiver should engage through the hole on the rear of the **buttplate assembly**. If the fitment of the **buttplate assembly** seems extremely tight on the **receiver**, loosen the screw holding the QD pockets together a quarter to half turn, as the QD pockets and screw can be used to control the compression of the “fingers” on the **upper receiver**.

STEP 22:

Take the **cheekpiece left half** (part 87) and **cheekpiece right half** (part 88) and mount on the picatinny rail of the receiver with three (3) **M3 x 0.5mm 30mm long socket head cap screws** (part 108) using the supplied 2.5mm hex key. It is easiest to start with the front and rear screws and then the middle screw. Make sure the **cheekpiece** is flush with the front edge of the **receiver**.

WARNING: SERIOUS INJURY COULD RESULT FROM FIRING AN ASSEMBLED FIREARM WITHOUT THE INCLUDED CHEEKPIECE INSTALLED. FOR SAFETY THE CHEEKPIECE SHOULD ALWAYS BE INSTALLED.

STEP 23:

Slide the **Picatinny riser** (part 40609) onto the Picatinny rail atop the **hand guard** (part 6) from the front and install with the two (2) **M4 x 0.7mm 30mm long round head screws** (part 107) using the supplied 2.5mm hex key. Note that the **Picatinny riser** is optional and is not necessary if your optic already has the proper mount and/or height for use.

FINAL FUNCTION CHECK:

Cycle the firearm and place the **safety** on “Safe.” Pull the **trigger** and ensure that the **hammer** does not fall. Place the **safety** on “Fire” and pull the **trigger** and ensure the **hammer** falls. While continuing to hold the **trigger** back, cycle the **charging handle** and then release the **trigger** and the **trigger** should move forward to reset on its own when released. Pull the **trigger** again and ensure the **hammer** falls. If the firearm passes the function check, it is now ready to use!

WARNING: THIS KIT IS FOR RIGHT-HANDED USE ONLY. SERIOUS INJURY COULD RESULT FROM FIRING AN ASSEMBLED FIREARM LEFT-HANDED.

CAUTION:

Due to the inherent design of the trigger group of the CZ Scorpion® EVO 3 it is necessary to place the **safety** on “Fire” to cycle the firearm and/or open the **bolt**. When placed on “Safe” the **trigger group** is locked and will not allow the **bolt** to cycle or open.

FIELD STRIP:

To field strip the Scorpion Bullpup Kit, make sure the firearm is unloaded and on “Safe.” Depress the button in the hole in the rear of the **buttplate assembly** and slide the **buttplate assembly** downward until it can be removed. A pen or other tool can be used to depress the button. Next, set the **safety** to “Fire” and lock the bolt open. Press the **disassembly pin** through right side of the firearm until it is fully visible on the left. Hinge the **lower receiver** downward and remove. If the **lower receiver** seems to “stick,” ensure that the **disassembly pin** is fully out to the left. Remove the **bolt** from the **upper receiver** per the CZ Scorpion® EVO instruction manual. Components of the Bullpup EVO conversion kit are made of the same polymer the CZ Scorpion® EVO (the buttpad is made of a different rubber polymer compound) and the same cleaning agents may be used on both. Clean any dirt and grime out of the **lower receiver** with cleaning patches.

For questions concerning this kit or for more
information, please contact us at **info@cz-usa.com**.

CZ-USA
P.O. Box 171073
Kansas City, KS 66117
1-800-955-4486
www.cz-usa.com

© 2019 CZ-USA, All Rights Reserved
Press 10/10/2019